

GING INTERIORS

www.swinburne.edu.au/design/portfolios/users/2946/#

MELBOURNE
COMMUNITY
COOKING
SCHOOL

80 COLLINS STREET
MELBOURNE VIC 3000

COMMENTS:

[illegible]

DRAFT

Site plan

Project number	2013 - 00001
----------------	--------------

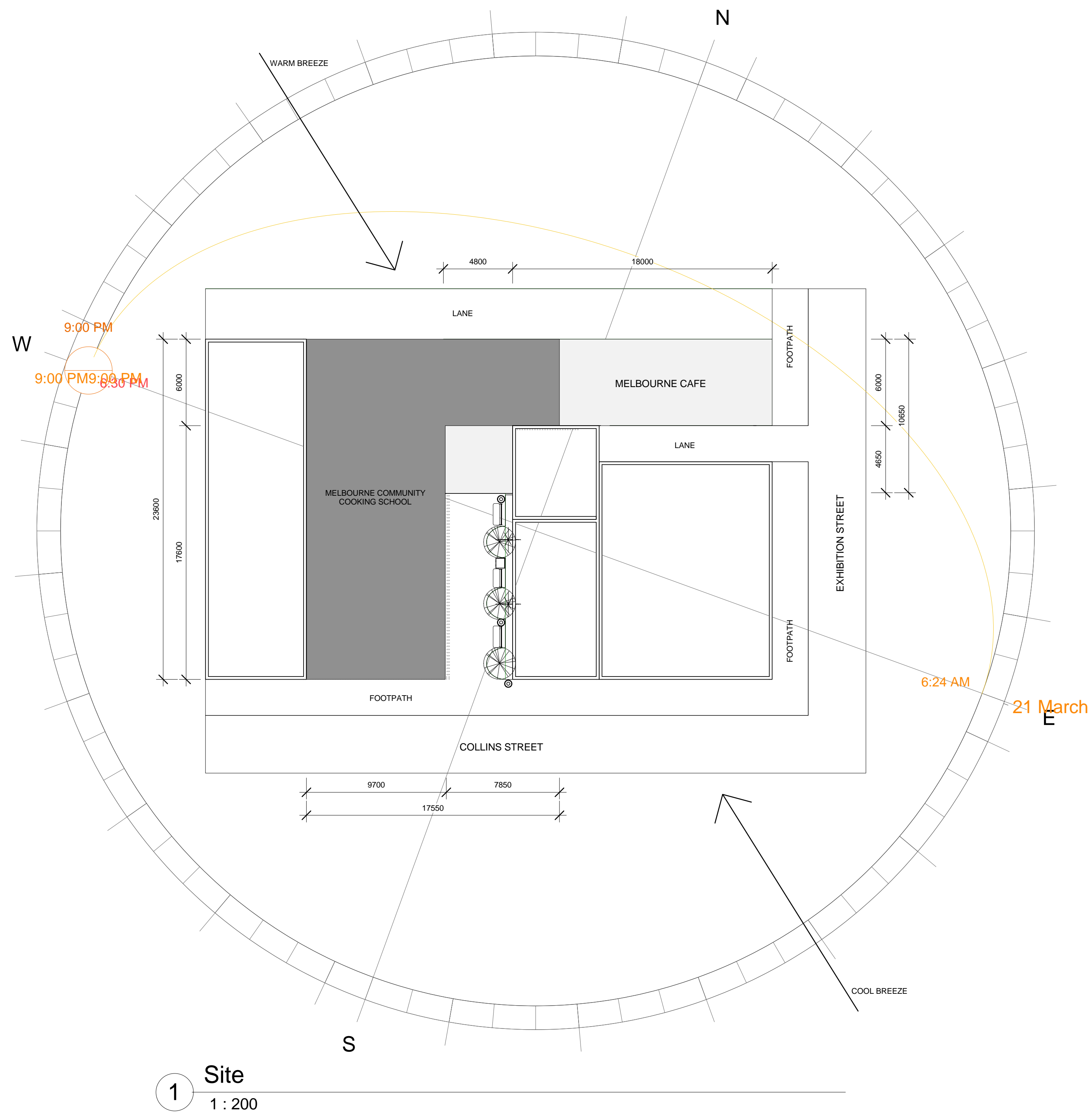
Date 11 JUNE 2013

Drawn by **ging aurelio laforteza**

Checked by	Checker
------------	---------

A01.01

Scale	As indicated
-------	--------------



www.swinburne.edu.au/design/portfolios/users/2946/#

80 COLLINS STREET
MELBOURNE VIC 3000

[illegible]

Scale 1 : 100

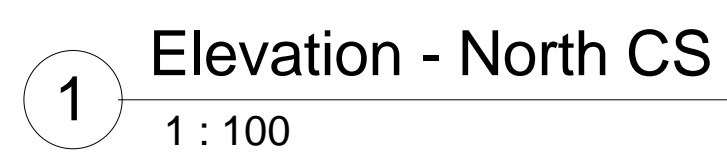
25/06/2013 4:54:35 PM

[www.swinburne.edu.au/design/portfolios/
users/2946/#](http://www.swinburne.edu.au/design/portfolios/users/2946/#)

80 COLLINS STREET
MELBOURNE VIC 3000

[illegible]

Scale 1 : 100



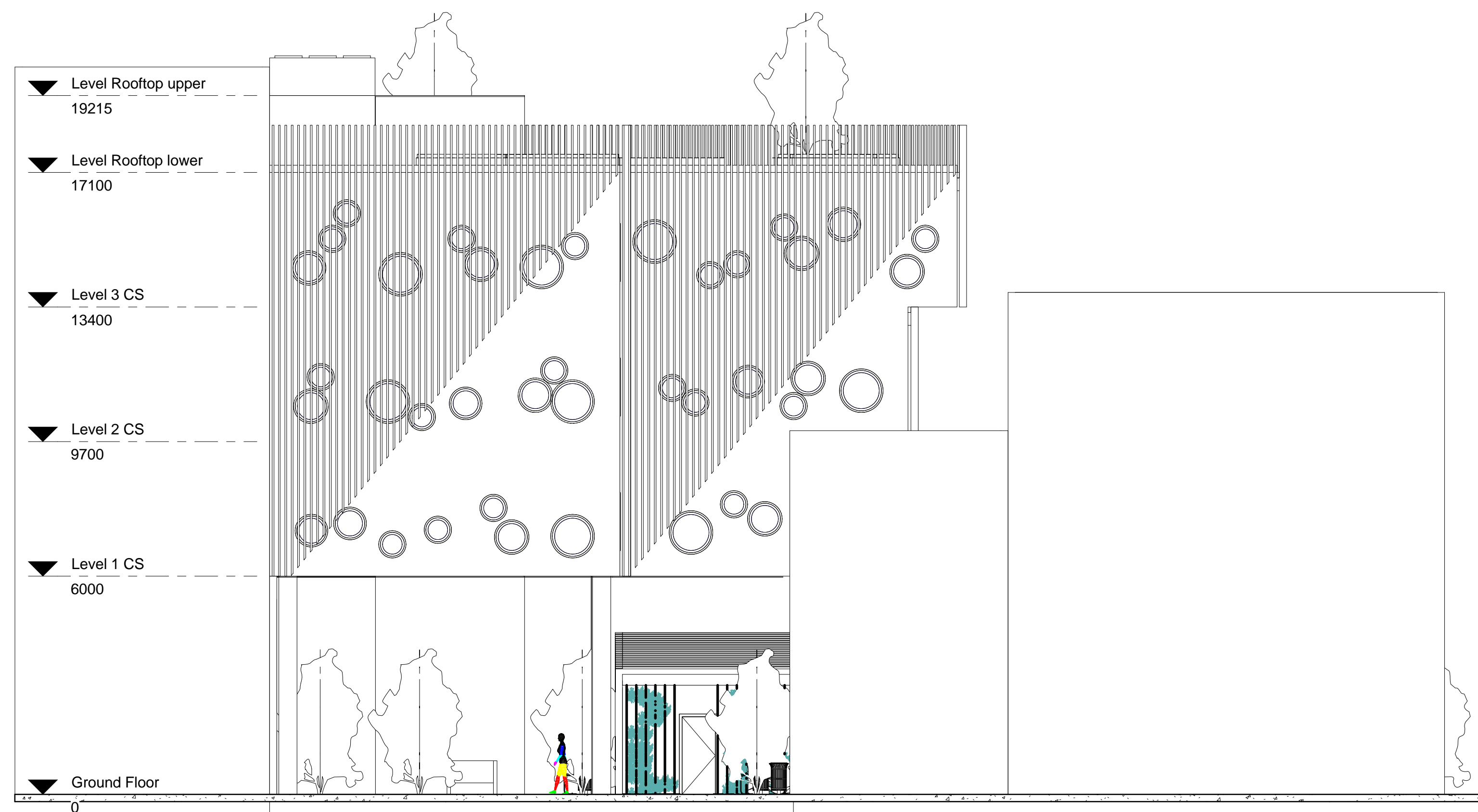
GING INTERIORS

[www.swinburne.edu.au/design/portfolios/
users/2946/#](http://www.swinburne.edu.au/design/portfolios/users/2946/#)

MELBOURNE
COMMUNITY
COOKING
SCHOOL

80 COLLINS STREET
MELBOURNE VIC 3000

COMMENTS:



1 Elevation South CS
1 : 100

[illegible]

DRAFT

Elevations

Project number	2013 - 00001
----------------	--------------

Date 11 JUNE 2013

Drawn by **ging aurelio laforteza**

Checked by	Checker
------------	---------

A04.02

Scale 1 : 100

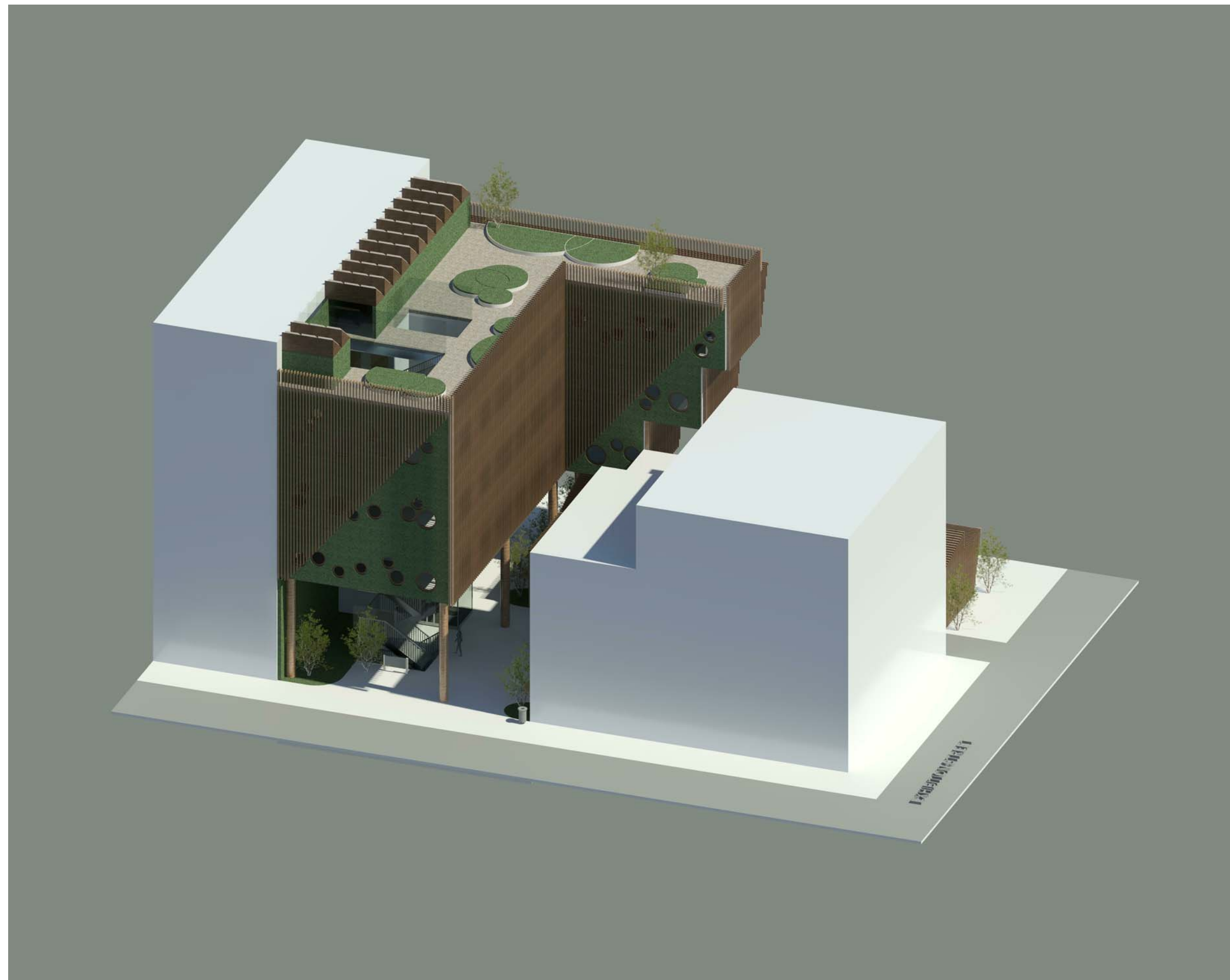
www.swinburne.edu.au/design/portfolios/users/2946/#

80 COLLINS STREET
MELBOURNE VIC 3000

[illegible]

Scale 1 : 50





NOTE:

DUE TO TIME
CONSTRAINTS, MANY
ELEMENTS ARE NOT YET
SHOWN IN THESE
3D IMAGES. FOR
EXAMPLE, THE ROOFTOP
GARDENS DO NOT YET
HAVE PLANTS.

PLEASE REFER TO THE
TECHNICAL DRAWINGS
FOR MORE INFORMATION.

GING INTERIORS

[www.swinburne.edu.au/design/portfolios/
users/2946/#](http://www.swinburne.edu.au/design/portfolios/users/2946/#)

MELBOURNE
COMMUNITY
COOKING
SCHOOL

80 COLLINS STREET
MELBOURNE VIC 3000

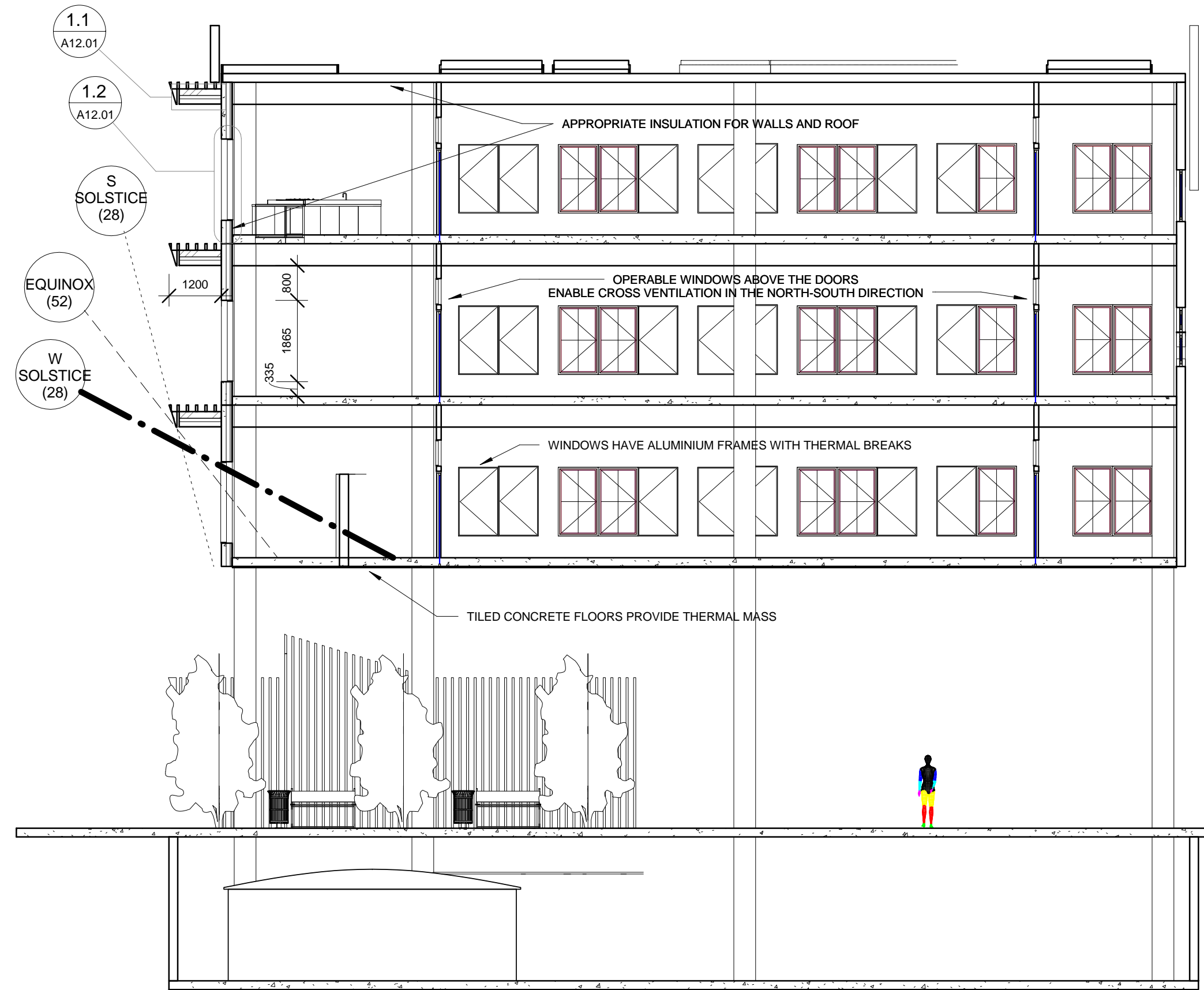
COMMENTS:

[illegible]

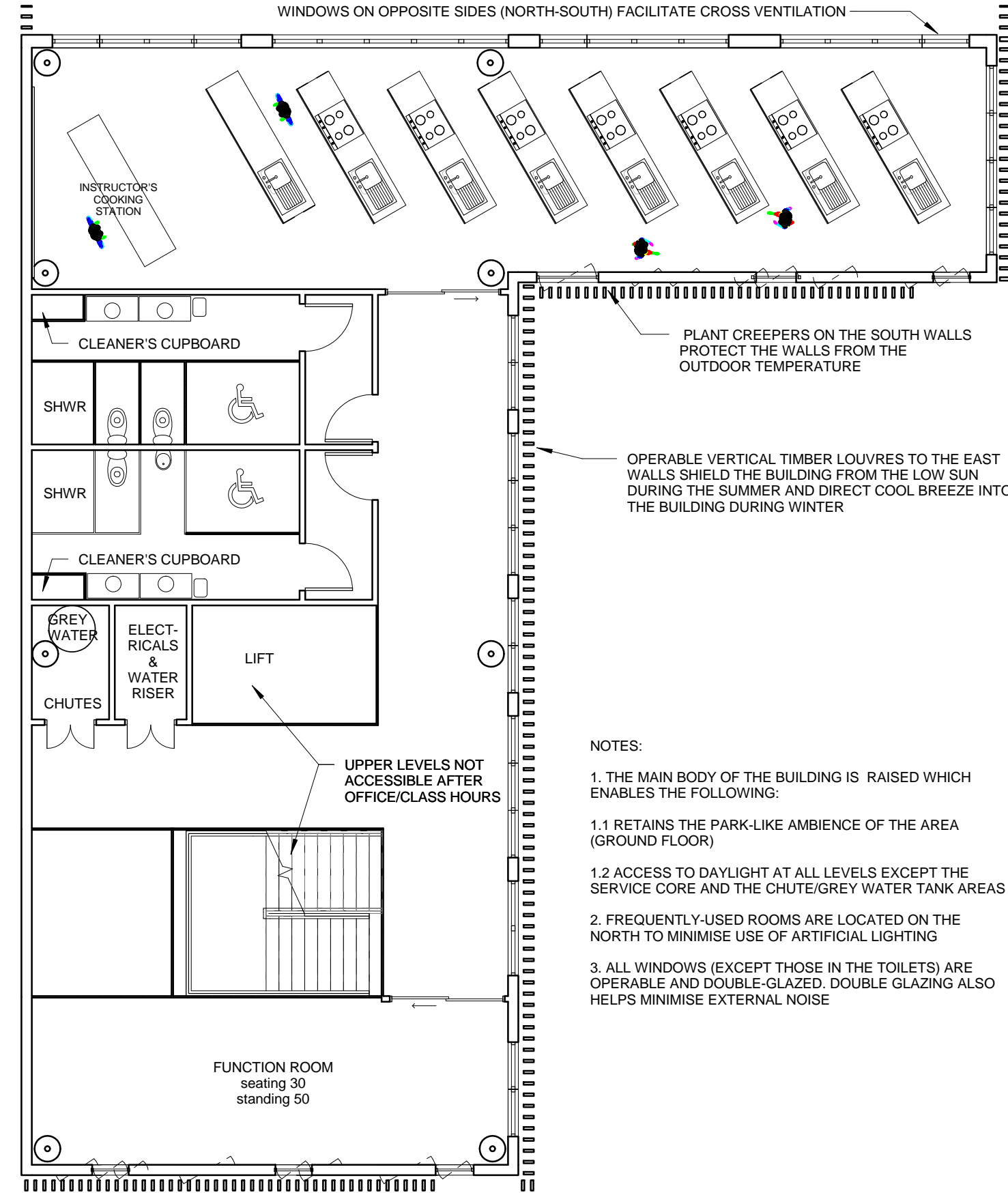
DRAFT

Perspectives (external)

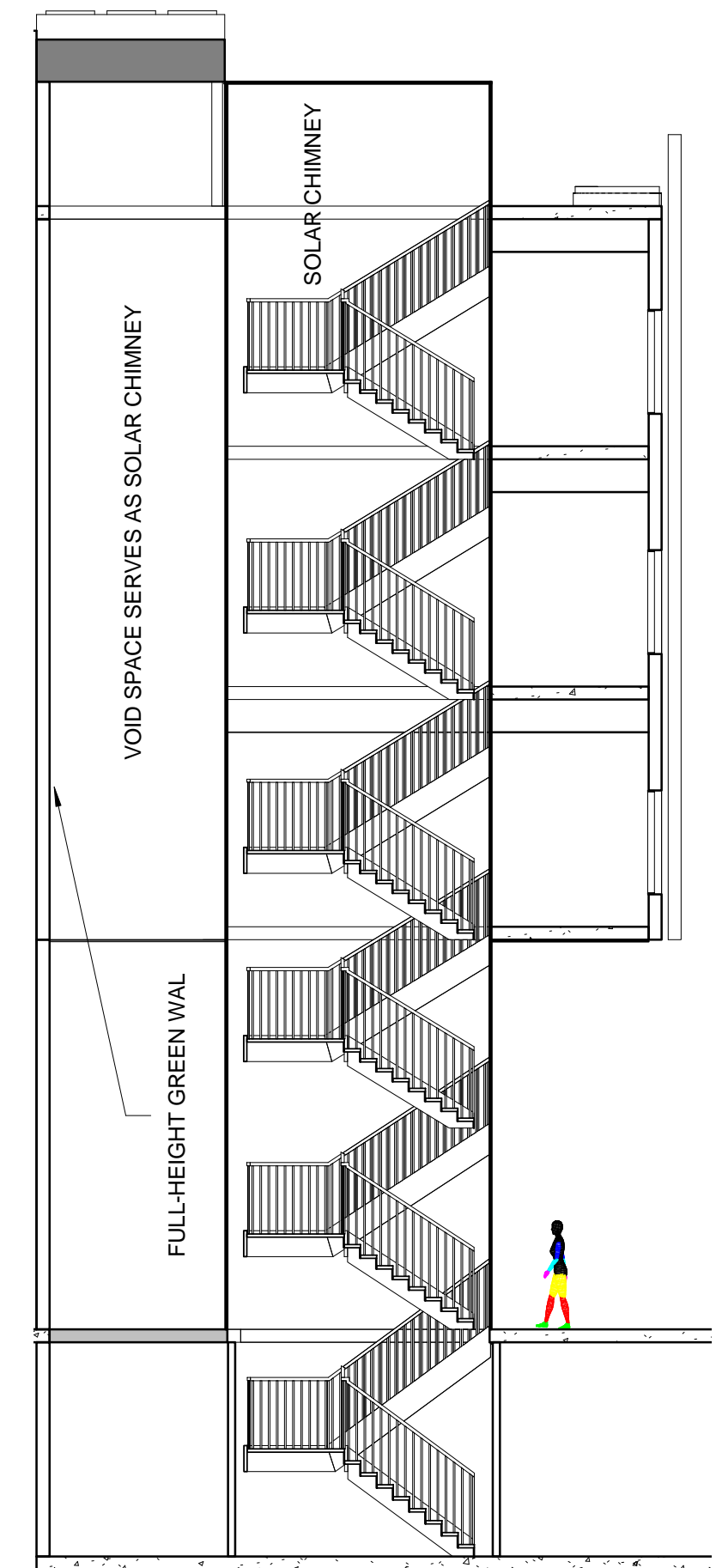
Project number	2013 - 00001
Date	11 JUNE 2013
Drawn by	ging aurelio laforteza
Checked by	Checker
A11.02	
Scale	1 : 1



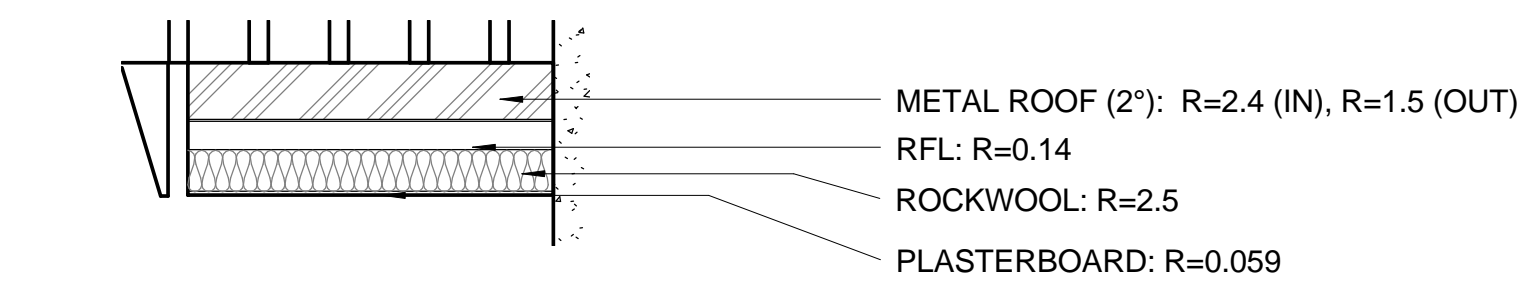
1 Section - CS NorthSouth 1
1 : 100



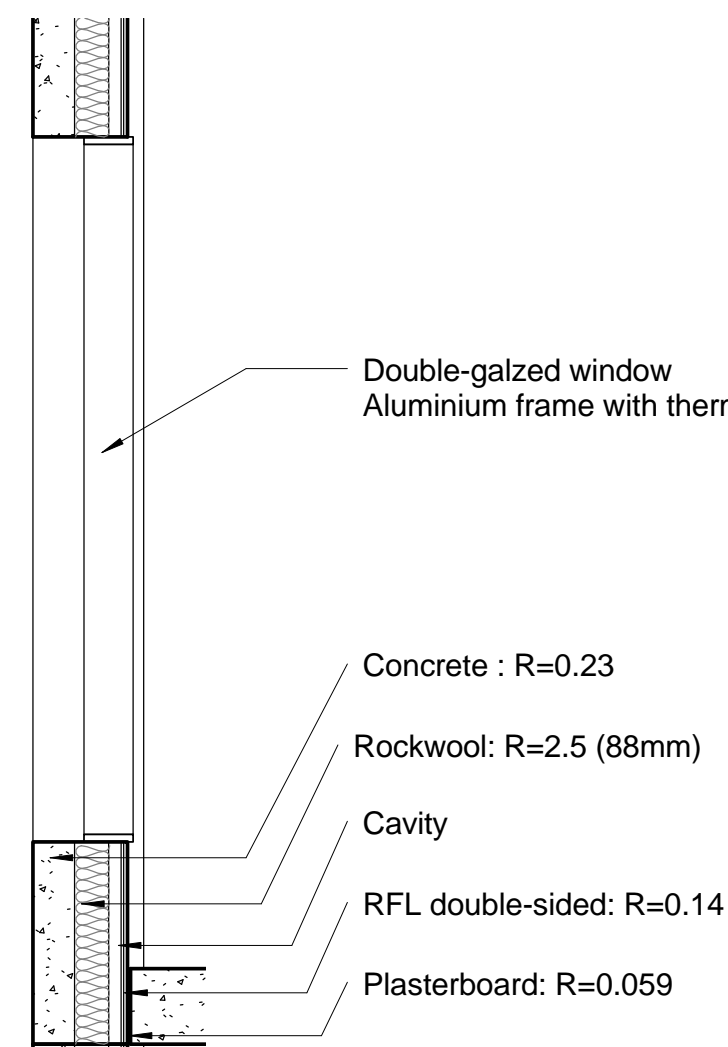
2 Level 3 CS sustain features
1 : 100



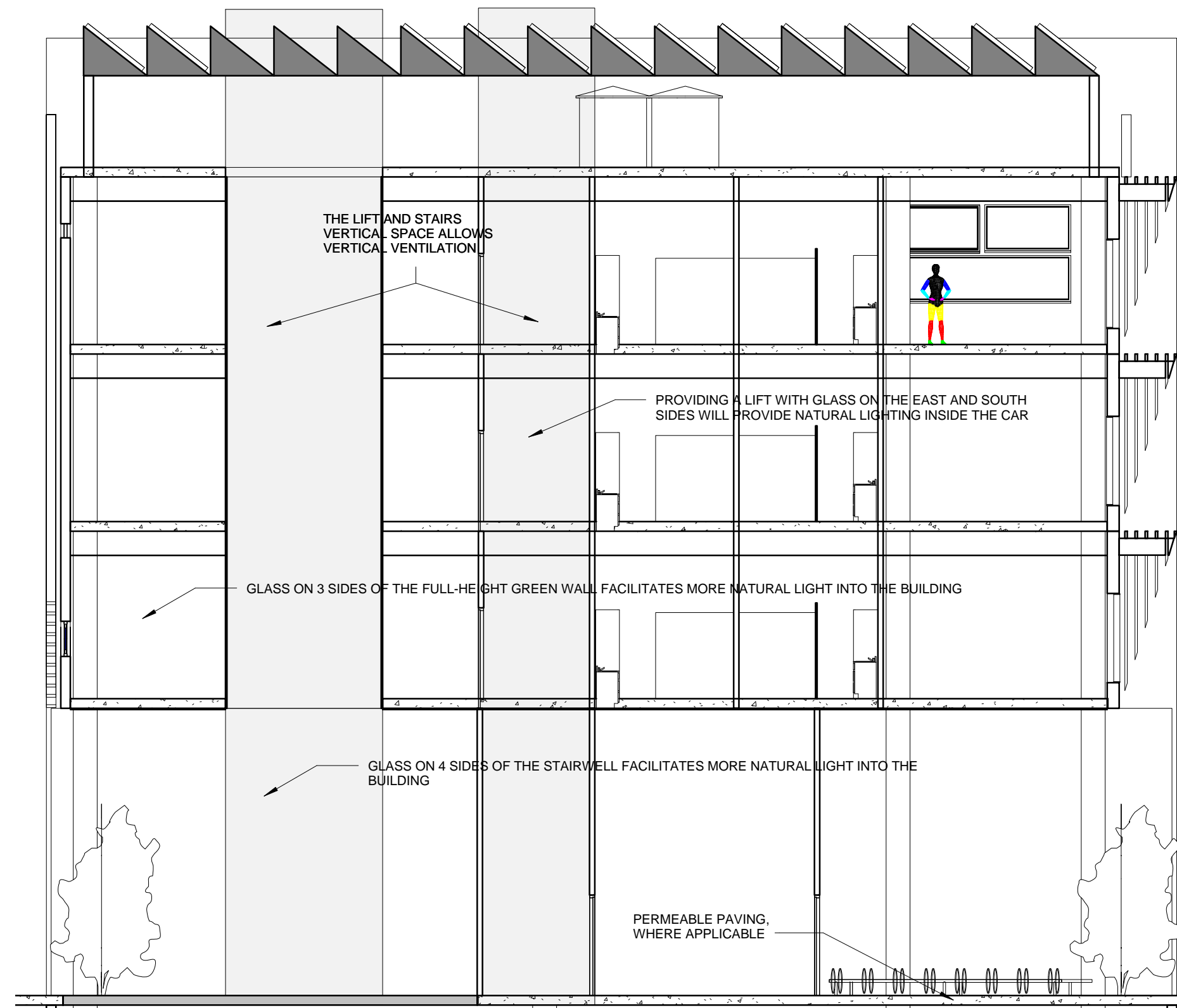
4 Section WestEast 1
1 : 100



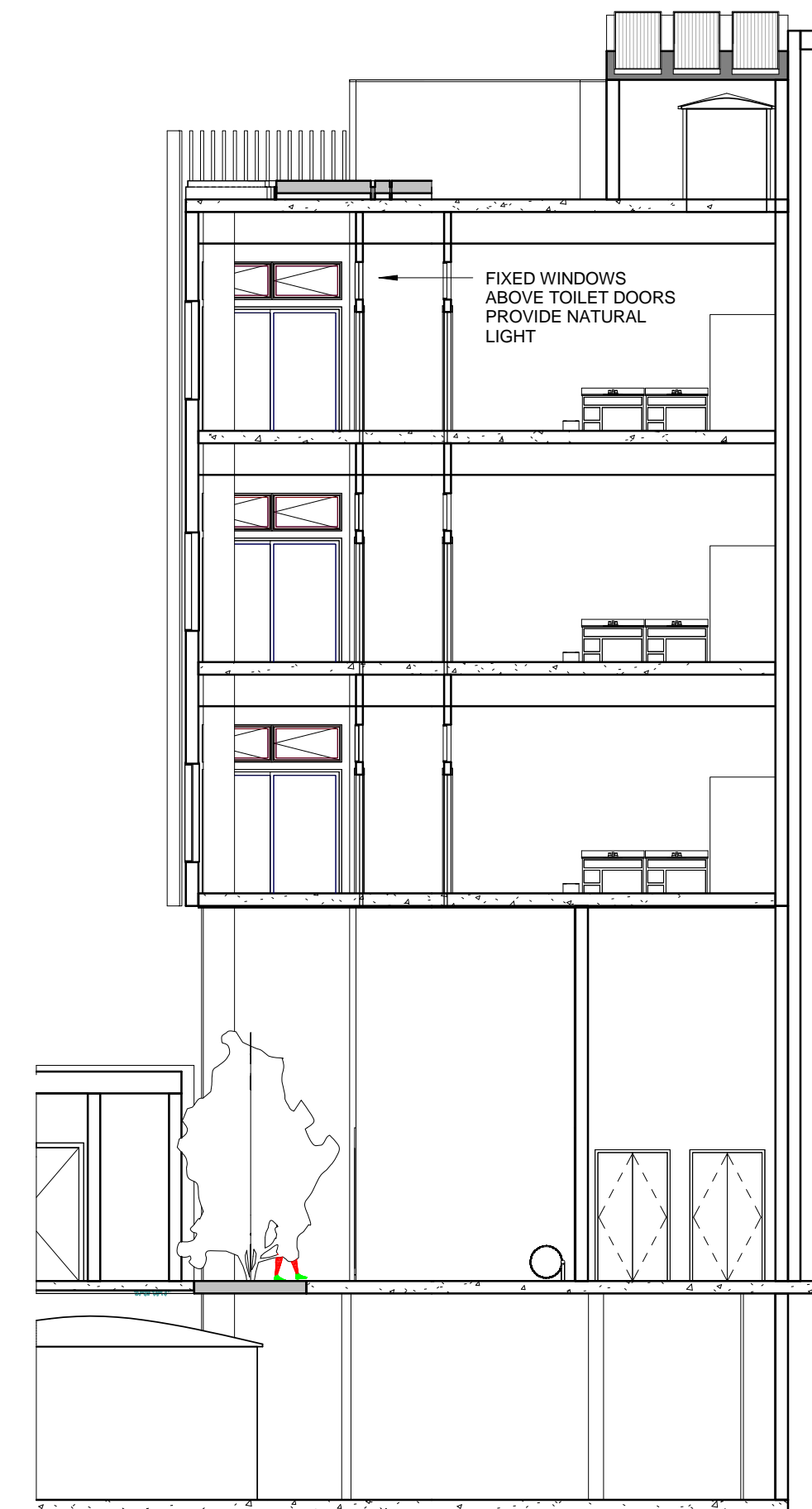
1.1 Details - CS Roof
1 : 20



1.2 Details - CS Wall
1 : 20



3 Section - CS NorthSouth 2
1 : 100



5 Section - CS WestEast 2
1 : 100

GING INTERIORS

www.swinburne.edu.au/design/portfolios/users/2946/#

MELBOURNE COMMUNITY COOKING SCHOOL

80 COLLINS STREET
MELBOURNE VIC 3000

COMMENTS:

No.	Description	Date

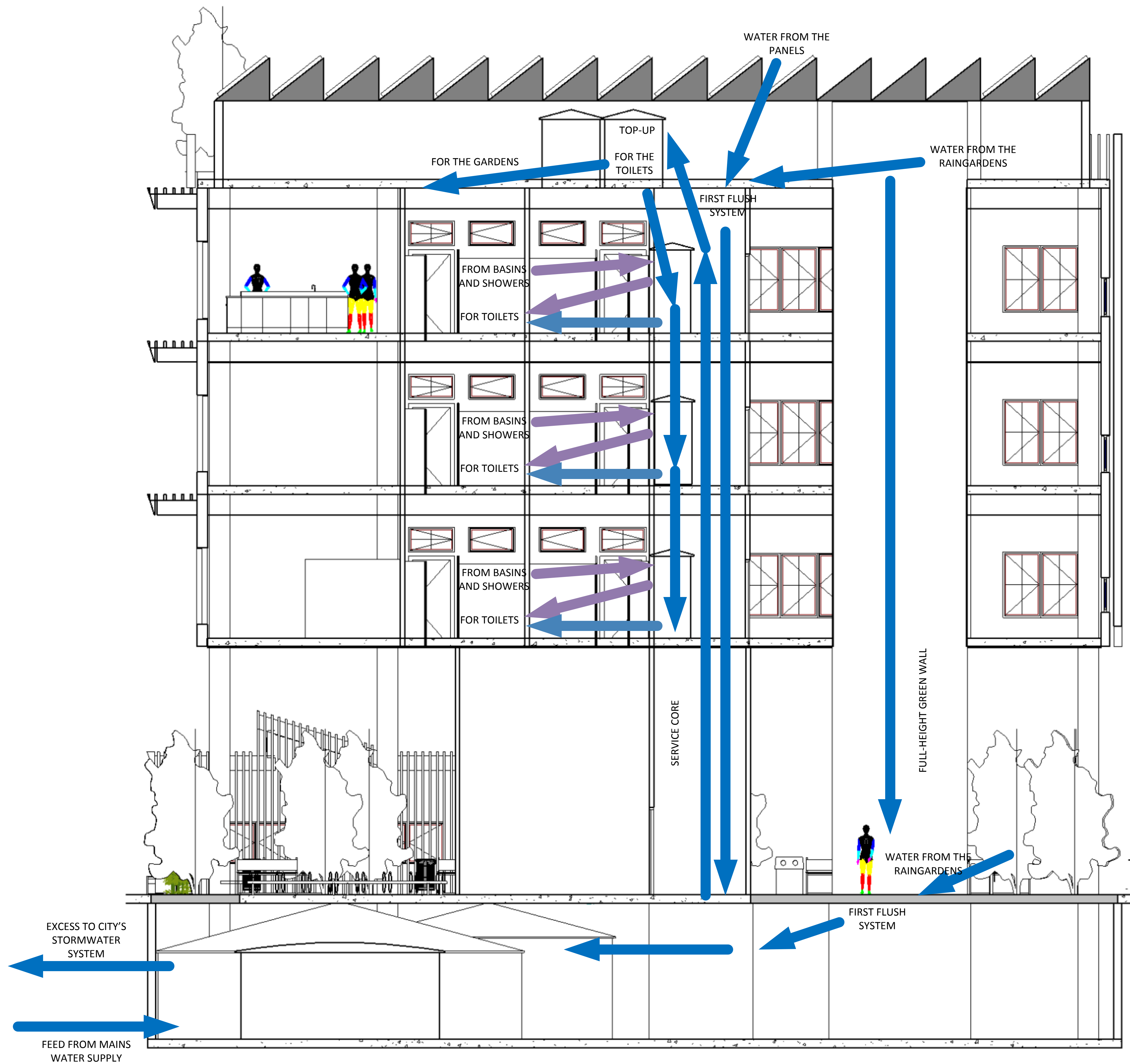
DRAFT

Other sustainability features

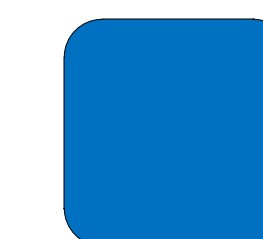
Project number	2013 - 00001
Date	11 JUNE 2013
Drawn by	ging aurelio laforteza
Checked by	Checker

A12.01

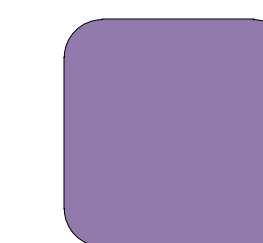
Scale	As indicated
-------	--------------



SCHEMATIC WATER USAGE DIAGRAM



STORMWATER



GREY WATER